



India Meteorological Department
(Ministry of Earth Sciences)

SPECIAL MESSAGE

TIME OF ISSUE: 1300 HOURS IST

DATED: 22.05.2021

FROM: INDIA METEOROLOGICAL DEPARTMENT (FAX NO. 24643965/24699216/24623220)

TO: CONTROL ROOM, NDM, MINISTRY OF HOME AFFAIRS (FAX.NO. 23093750)

CONTROL ROOM NDMA (FAX.NO. 26701729)

CABINET SECRETARIAT (FAX.NO.23012284, 23018638)

PS TO HON'BLE MINISTER FOR S & T AND EARTH SCIENCES (FAX NO.23316745)

SECRETARY, MOES, (FAX NO. 24629777)

H.Q. (INTEGRATED DEFENCE STAFF AND CDS) (FAX NO. 23005137/23005147)

DIRECTOR GENERAL, DOORDARSHAN (23385843)

DIRECTOR GENERAL, AIR (23421105, 23421219)

PIB MOES (FAX NO. 23389042)

UNI (FAX NO. 23355841)

D.G. NATIONAL DISASTER RESPONSE FORCE (NDRF) (FAX NO. 26105912, 2436 3260)

DIRECTOR, PUNCTUALITY, INDIAN RAILWAYS (FAX NO. 23388503)

CHIEF SECRETARY, ANDAMAN & NICOBAR ISLANDS (FAX NO. 03192- 232656)

CHIEF SECRETARY, WEST BENGAL (FAX NO. 033-22144328)

CHIEF SECRETARY, GOVT. OF ODISHA (FAX NO. 0674 -2536660)

CHIEF SECRETARY, ANDHRA PRADESH (FAX NO. 0863-2441029, 08645-246600)

CHIEF SECRETARY, TAMIL NADU (FAX NO. 044-25672304)

CHIEF SECRETARY, PUDUCHERRY (FAX NO. 0413-2337575, 2334145)

CHIEF SECRETARY, SIKKIM (FAX NO. 3592-222851)

Sub: A low pressure area formed over eastcentral Bay of Bengal and adjoining north Andaman Sea, today the 22nd May and its intensification into a Cyclonic Storm by 24th May.

A Low pressure area has formed over **eastcentral Bay of Bengal today the 22nd May 2021 morning (0830 hrs IST)**. It is very likely to concentrate into a Depression over eastcentral Bay of Bengal by tomorrow, the 23rd May morning. It is very likely move north-northwestwards, intensify into a **Cyclonic Storm** by 24th May and further into a Very Severe Cyclonic Storm during the subsequent 24 hours. It would continue to move north-northwestwards, intensify further and reach North Bay of Bengal near West Bengal and adjoining north Odisha & Bangladesh coasts around 26th May morning.

It is very likely to cross West Bengal and adjoining north Odisha & Bangladesh coasts around evening of 26th May.

Warnings:

(i) Rainfall:

- **Andaman & Nicobar Islands:** Light to moderate rainfall at most places with heavy to very heavy falls at isolated places on 22nd & 23rd May.
- **Gangetic West Bengal:** Light to moderate rainfall at most places with heavy falls at isolated places very likely to commence over coastal Districts from 25th May with significant increase in spatial extension and intensity subsequently. Light to moderate rainfall at most places with heavy to very heavy falls a few places & extremely heavy falls at isolated places very likely on 26th May.
- **Sub- Himalayan west Bengal & Sikkim-** Light to moderate rainfall at most places with heavy to very heavy falls at isolated places very likely on 26th May and heavy to very heavy rainfall at a few places and extremely heavy falls at isolated places on 27th.
- **Odisha:** Light to moderate rainfall at many places with heavy falls at isolated places very likely over north coastal Odisha on 25th and over north Odisha on 26th May.

Spatial rainfall distribution: Isolated: <25%, A few: 26-50%, Many: 51-75%, Most: 76-100%

Rainfall amount (mm): Heavy rain: 64.5 – 115.5, Very heavy rain: 115.6 – 204.4, Extremely heavy rain: 204.5 or more.

(ii) Wind warning

- Squally wind speed reaching 50–60 kmph gusting to 70 kmph is likely to prevail over and around Andaman & Nicobar Islands, Andaman Sea & adjoining eastcentral and southeast Bay of Bengal on 22nd May. It is very likely to increase becoming 55–65 kmph gusting to 75 kmph over **eastcentral Bay of Bengal and adjoining north Andaman Sea** from 23rd Morning. It is very likely to increase further becoming Gale wind speed reaching 65 to 75 gusting to 85 over major parts of central Bay of Bengal from 24th morning and would increase gradually till 25th May.
- Squally wind speed reaching 40-50 kmph gusting 60 kmph is very likely to prevail over North Bay of Bengal and along and off Odisha – West Bengal – Bangladesh coasts from 24th evening. It would increase gradually becoming 50-60 kmph gusting to 70 kmph from 25th evening. It would further increase becoming gale wind speed 60-70 kmph gusting to 80 kmph from 26th early hours along and off West Bengal & adjoining north Odisha and Bangladesh coasts. It would gradually increase further becoming 90-100 gusting to 110 kmph from 26th forenoon and increase thereafter till 26th evening.

(iii) Sea condition

- Sea conditions will be rough to very rough over Andaman Sea & adjoining eastcentral Bay of Bengal on 22nd & 23rd May, High to very High over major parts of central Bay of Bengal, north Bay of Bengal and along & off Odisha – West Bengal - Bangladesh coasts during 24th – 26th May.

(iv) Tidal wave

Tidal waves of 1- 2 meter height very likely to inundate low lying areas of Andaman & Nicobar islands on 22nd & 23rd May.

(iv) Fishermen Warning

- The fishermen are advised not to venture into southeast & east central Bay of Bengal, Andaman Sea and along and off Andaman & Nicobar Islands during 22nd – 24th May, into central Bay of Bengal from 23rd – 25th May and into north Bay of Bengal and along & off West Bengal – Odisha – Bangladesh coasts from 24th – 26th May.
- Those who are out in the Deep Sea of eastcentral & adjoining northeast Bay of Bengal are advised to return to the coast.

The intensification & likely movement of the system is under continuous surveillance and the concerned state governments are being informed regularly.

Kindly visit www.rsmcnewdelhi.imd.gov.in and www.mausam.imd.gov.in for regular updates.

(Sunitha Devi)
Scientist-F,
Head CWD, New Delhi

Copy to: ACWC Chennai/ ACWC Kolkata/CWC Bhubaneswar/ CWC Visakhapatnam

Spatial rainfall distribution: Isolated: <25%, A few: 26-50%, Many: 51-75%, Most: 76-100%
Rainfall amount (mm): Heavy rain: 64.5 – 115.5, Very heavy rain: 115.6 – 204.4, Extremely heavy rain: 204.5 or more.

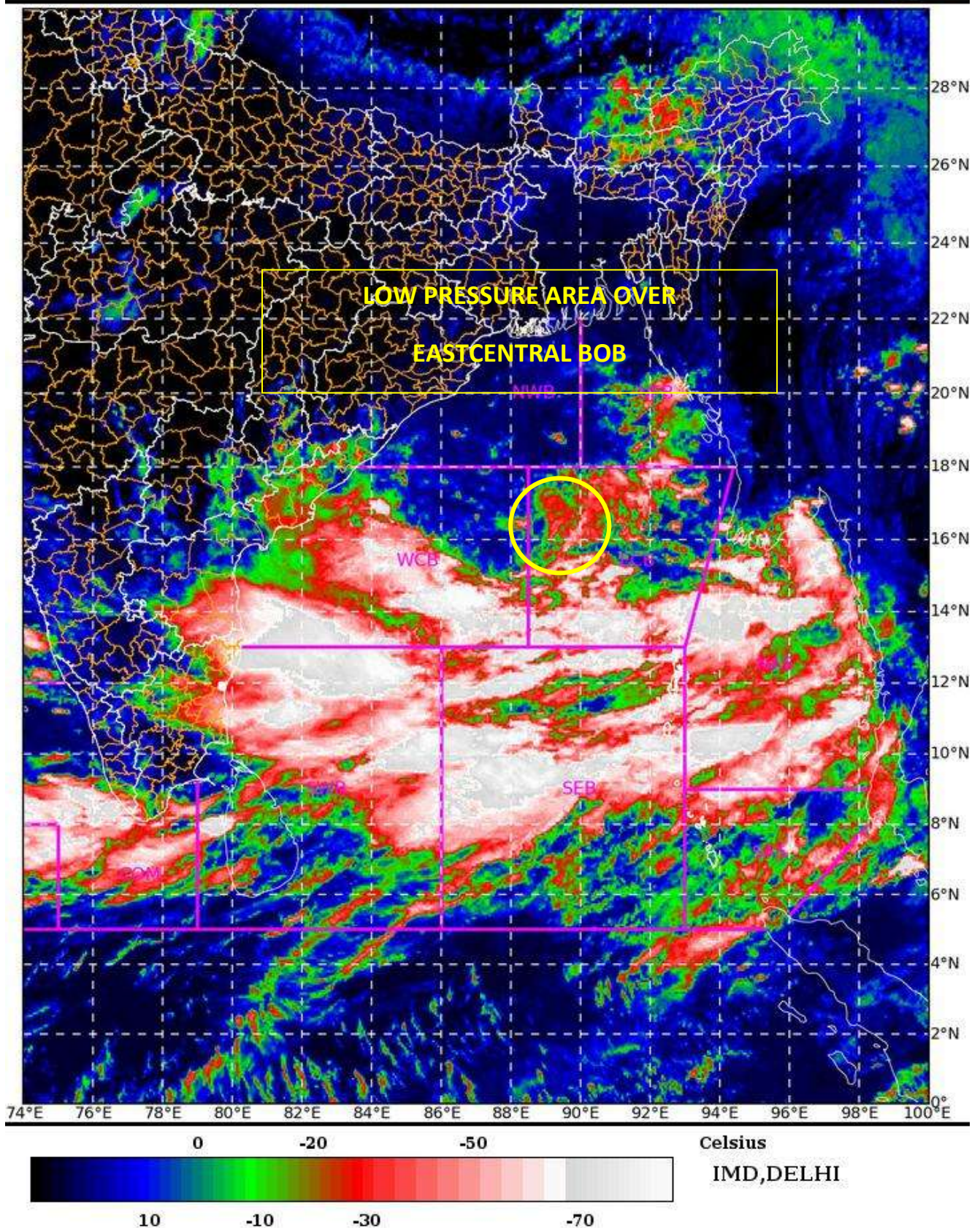
SAT : INSAT-3D IMG

22-05-2021/(0430 to 0457) GMT

IMG_TIR1_TEMP 10.8 um

22-05-2021/(1000 to 1027) IST

L1C Mercator



Spatial rainfall distribution: Isolated: <25%, A few: 26-50%, Many: 51-75%, Most: 76-100%
Rainfall amount (mm): Heavy rain: 64.5 – 115.5, Very heavy rain: 115.6 – 204.4, Extremely heavy rain: 204.5 or more.